

TV KAMERA KIT KOMPONENTS

List No. 754 N/chg

We have here listed some of the "hard to find", difficult to fabricate cabinets, chassis, and components to help reduce the work in your construction projects and thereby increase your ease of construction and pleasure derived therefrom. Basic components kits plus complete component kits are also listed.

Transformers: Power

#5601 - An excellent value in a specially designed power transformer suitable for use with electromagnetic, electrostatic cameras or monoscope. High voltage winding has 150V at either side of center tap plus additional 400V winding on one side for extra high voltage required for 2" electrostatic camera tube or monoscope circuitry plus 6.3V filament winding. Husky yet compact. 117V primary \$18.95

#5600 - Power transformer used in AV transmitter #19,800 and useful with AV bd. #19,801. This special transformer supplies both B+ and 2 filament windings for use in circuit as shown. 115V AC 60 cycle primary. \$4.50

Yokes-Yikes: A most varied assortment of deflection yokes and focus coils to suit almost any application.

#1800 - Here, an economical package for the experimenter, is a completely wound and mounted focus coil, 2 wound vertical coils and 2 wound horizontal coils for the deflection yoke plus a 6" square piece of Mu-metal shielding which may be assembled into a complete deflection yoke assy. Complete w/detailed instruction & assy. sheet. \$24.50

#1801 - Miscellaneous Mfgs. over-runs, etc. direct drive deflection yoke and focus coil assembly which may be used in the "TV - YOU CAN BUILD" - Circuitry. N & U - \$39.95

#1802 - SAME as 1801 except has transformer drive. New & Used -- \$39.95

#1803 - An exceptional value in a high resolution deflection yoke and focus coil assy. made by one of America's largest mfgs. - Brand New \$59.95

#1804 - SPECIAL - deflection yoke for direct drive horizontal & transformer drive vertically as used in the Grimson WIDE screen system. H=1MH; H Res. 3.5 ohms; V=50MH; V Res. 165 ohms. Complete with mating focus coil \$49.95

#1805 - Alignment coil type 2018D1 P.U.R.

#1806 - Broadcast quality deflection yoke and focus coil manufactured to the highest quality standards for use in direct drive circuits. \$99.50

LENSES

#3800 - F 1.9 48mm focal length in a focusing mount Leica Cannon Thread -\$19.95

#3801 - Mounting flange to mount lens on chassis - \$2.00

#3802 - Adaptor to mount Leica or Cannon Screw lens into a standard "C" mount - \$3.50

#3833 - SPECIAL - "C" mount for your camera lens. Lathe turned from aluminum and correct-ly threaded - NOW ONLY \$3.50

#3806 - A TERRIFIC BUY - \$34.50
W I D E A N G L E

F 1.9 Lens in focusing mount with screw in sun shade, adaptor flange to "C" mount, mounted on a 3-3/8 x 2-5/8, threaded for "C" lens use - Limited Quantity - ONLY \$34.50 each
ONE INCH LENSES (25 mm)

#3803 - 1" NEW F 1.9 - SPECIAL - \$29.95

#3807 - 1" Used F 1.9 \$19.95

#3808 - 1" NEW F 1.5 \$34.95

#3809 - 1" Used F 1.5 \$24.95

#3803 - Miscellaneous Lenses - Brand NEW
1" F 1.9 Lenses in standard "C" type focusing mounts with adjustable iris mfg. by Argus Vido-tar, Elitar Soligar, & Wollensak & others of comparable quality. No choice. Regular net to \$58.00 our SPECIAL \$29.95 each.

DEC Stock #3804 - Special on our front element assemblies for our standard Stock #3810 Scanop-tic lens 2 to 1 squeeze minimum resolution 80 optical pairs per mm. Type 1 (mini) This is the front lens element assembly which is designed to be mounted in front of your standard 16mm lens to achieve the wide screen effect. Our Stock #3804 is optically correct, but in need of mechanical adjustments & repairs. Special at \$9.95 each

DEC Stock #3805 - Same anamorphic front lens assembly which is mechanically and optically SPECIAL at \$19.95

SEE our CATALOG #964M2 - page 14 for additional, useful lenses.

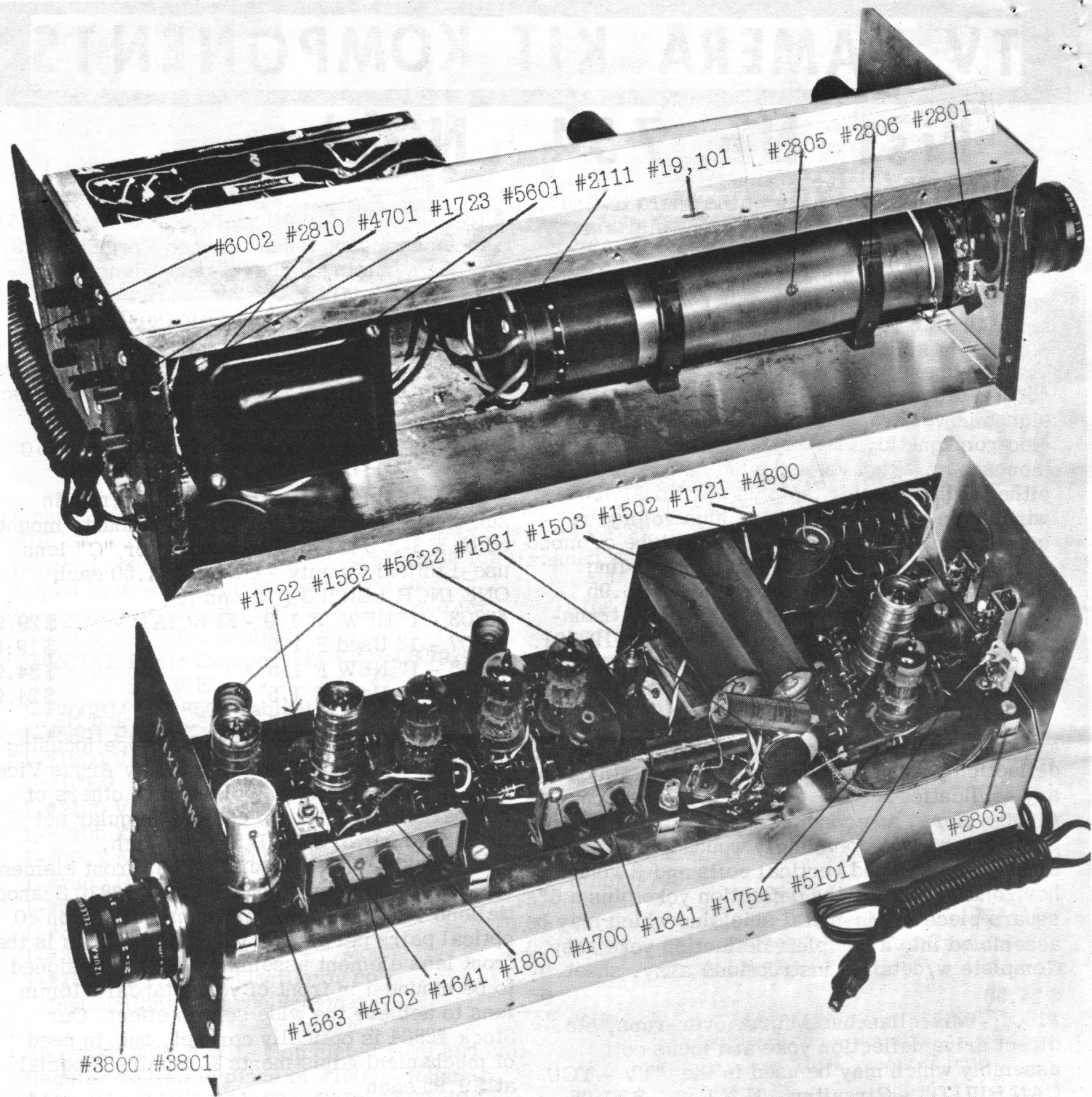
#760 - XTAL 15.750 kc - \$28.00

#761 - XTAL 31.5 kc - \$25.00

#19,820 - HEAVY duty tripod - four sectional opens to 60", closed 16", Wt. 2 3/4 lbs. Made of durable light aluminum throughout - W/double riser center elevator panhead ---NOW - \$17.95

Sockets:

#2100 - BRAND NEW socket for 1" electromag-netic Vidicons Type 7038, 6198, etc. \$3.50 1



TELEVISION CAMERAS

Stock #19,109 - Prev. Stock #253-D - We have temporarily discontinued the manufacture of these Simplified TV Camera using 2 inch Electrostatic Pick up tube, which were originally made here in Rockville, and have some incomplete units on hand. As shown, all major components are mounted, including printed circuit board for video amplifiers, deflection circuits, power transformer, main plate and cover, lens mounting flange etc., They will require considerable work to place in operation, and are not recommended unless you can follow a schematic easily. THIS IS NOT A KIT. When completed, you will have a camera which delivers both Video and RF output - TV Channels 2-6. Sensitive to low light levels with adequate resolution for most uses. For AMATEUR TV - as a TV Camera started, for sync generator, monoscope components, they are Excellent. Use 2-6C9 Video Amps, 2-6EA8 Sweep 1-6EZ8 Sweep, 2 - 12AT7 RF osc. & mod. Net Wt. 10 lbs. Size - 6 3/4" H x 5" W x 17" Long Consumes only 40 watts of power. No tubes or lens supplied but with representative schematic ONLY - \$49.95

Removed from NEW Cameras

#1721 - Wired power supply printed circuit board parts completely mounted and soldered - no power transformer - \$12.95

#1722 - Video Amp. & Sweep board - parts completely mounted and soldered. No tubes - requires 2 - 6C9, 2 - 6EA8, 1-6EZ8-\$29.95

#19,101 - Punched chassis w/ front and rear plates w/ clips for mounting printed circuit boards and 2 yoke brackets and clamps to hold 2" electrostatic camera or monoscope tube Now ONLY - \$9.95

#1723 - Rear Printed Circuit board with 4 pots mounted for Beam, target, focus, and col. \$8.00 Transformers: Power

#5601 - An excellent value in a specially designed power transformer suitable for use with electromagnetic, electrostatic cameras or monoscope. High voltage winding has 150V at either side of center tap plus additional 400V winding on one side for extra high voltage required for 2" electrostatic camera tube or monoscope circuitry plus 6.3V filament winding. Husky yet compact. 117V primary \$18.95

#5622 - Small vertical blocking oscillator transformer which when used in circuitry supplied 2" electrostatic Pixicon camera provides very excellent vertical frequency control. T-1 M-STC-8124 \$4.20

EXTRA SPECIAL-MANUFACTURERS-EXCESS BRAND-NEW-STOCK. SAVE-SAVE-SAVE-*****

#4801 - Diode D-7 Glass 38¢

#5700 - NE-1 Neon Bulb 12¢

#2111 - Socket for 2" elec. tube - 5527-1698 Monoscope, etc. \$1.50

#3800 Lens; F1.9 with adj IRIS & FOCUS. Color corrected, 7 element. Leica/Connon threaded mounting. SPECIAL-SPECIAL \$19.95

#3801 Mounting Flange to mount above lens on chassis or your old camera Special \$2.00

These cameras are useful for experimenting with other types of camera pick-up tubes as well as Monoscope and vidicon types.

Stock #700 F Type 5527 Electrostatic Camera pick up tubes NEW -- \$89.95

Checked good USED- - \$69.95

#783 \$1.50 Complete instruction sheets and Service information on this Electrostatic Type Camera complete with several large schematics with parts values; Only \$1.50

#19,820 Heavy Duty Tripod, four sections, opens to 60 inches, closed to 16 inches. Wt 2 3/4 Lbs.

Durable light Aluminum Construction with double center riser, panhead. Only \$17.95

#700 FA-2 Monoscope type of Electrostatic tube for use with above components as a stable pattern generator. Govt Cost \$100.00 Plus Special Now Only \$9.95

#19,857 - TV camera cabinet cover for camera #19,109 attractively painted with curved top corners 6 3/4 h x 5 w x 17" l, heavy aluminum \$3.95

#19,858 - Vented bottom cover 5 x 16". \$1.00 (Original camera #19,109 used a chassis 16" long 5" wide x 3 1/4" deep)

Volume Controls-Potentiometers:

#4700 - Spec. Dual 200K & 5 Meg for printed circuit mount (V height & H width) \$2.00

#4701 - Spec. Dual 500K Pots for printed circuit mount (Used both for beam and target and col. and focus) \$2.00

#4702 - Spec. Triple 500K Pots for printed circuit mount (used for horizontal center, vertical center & astigmatism controls) \$3.00

#1641 - Comp. Cond. 9-180pf C-15 PC type 27¢

#1562 - Elec. Cond. PC mount 50 mfd 25V 66¢

#1563 - Elec. Cond. PC mount 40-40 mfg. @ 150 V, C 12A & B \$1.14.

#1502 - Elec. Con. C; 3/8 mfd 550V \$1.68

#19,805 (#1561) Elec. Con. CX2N & C \$2.70

#1503 - Elec. Cond. CX-d & CX-e \$1.82 ea

#2810 - Triple RCA Phono Type output jacks 27¢

#6002 - AC cord & plug 37¢

#1754 - R.F. Choke used in Modulator Filament 56¢ ea.

#1841 - A small compact slug tuned coil providing excellent horizontal frequency stability with circuit supplied. (used in Pixicon electrostatic camera) \$1.78

#1860 - Peaking coil 100 mh L1-2-3-4 42¢ ea.

4800 - Diodes 400 ma 400 PIV (power supplies diodes D-1-2-3-4-5-8) 45¢ each

#1561 Printed Circuit Mount Elec Condenser 200-100-60 Mfd @ 175 WV DC \$2.70

#1503 P.C. Mount Elec Cond. 150 Mfd 200V Tubular, May be also pig tail mounted \$1.82 ea.

#1502 Tubular Elec Cond 8 Mfd@550VDC \$1.68

#5101 S.P.D.T. Slide Switch .20 ¢

#2805 MuMetal shield to protect tube or Def. circuit from stray magnetic field. 6X6in. \$3.95

#2806 Clamp to securely hold the 2" tube in its mounting saddle. .30 ¢ ea.

#2801 Front Ring clamp to make contact with the signal pick-up electrode of PIXICON. .45 ¢

#2803 Special Clips to support a Printed circuit board clear of a metal chassis ,10 ¢ ea.

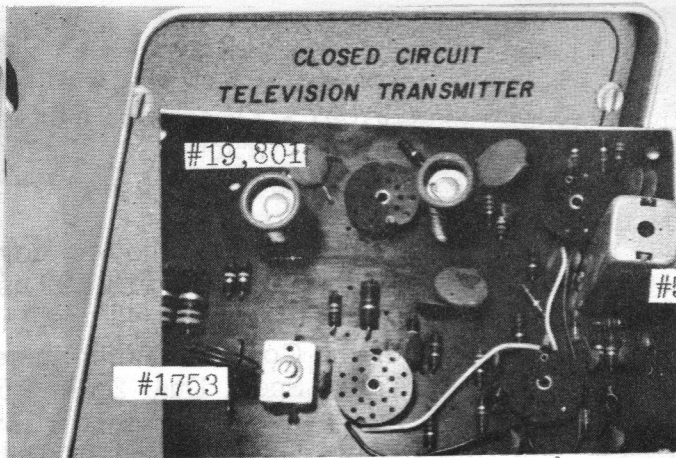
#1753 Air-Dux Coil used for R.F. Osc coil in some of the Video Transmitters .44 ¢

#5660 Special 4.5 Mc. Sound Transformer as used on A/V board for sound. 3/4Sq X 2 H PC Mt. \$2.80

THE CAMERA CHASSIS LISTED ABOVE IS 16" Long X 5" Wide X 3 1/4 Deep.



#19,803 Cabinet Only



AV TRANSMITTER

DEC Stock #19,800 - A complete low cost modulator which will accept inputs of both video from your TV camera and audio from your microphone or other source and mix them and modulate them on to any standard VHF channel from 2 to 6. Regularly \$199.50 - SPECIAL \$99.95. Entire unit is self-contained utilizing 4 tubes and power supply. Specification sheet will be supplied upon request. Performance is somewhat less than data sheet specification but adequate for normal use.

#19,800 Completely wired and tested TT-1- Regular \$199.50 - SPECIAL - Close out at 1/2 Price - \$99.95

#19,801-Audio Visual Mixer-These printed circuit boards were designed to mix the audio input from a microphone or other source w/the video output from a CCTV camera-they were to combine the audio (FM) on a 4.5 Mc separated carrier from the Video R.F. generated (channels 2-6) so that compatible sound & video could be rec'd. on std. intercarrier type of TV Receiver. None of the components had been soldered to the boards when the mfr. changed his design. For Ham TV experimenters CCTV operators who can complete these units & add a small power supply, they represent a challenge & a solution to a problem. No tubes nor power supply as shown w/small parts mounted but not soldered. No Tubes - \$9.95 - Shipping weight 3 lbs.

#791-Schematic with parts values for Stock

#19,801 - \$1.00

#19,802 A-V Metal sub chassis with mounting clips- Drawing "A" \$1.95

#19,803 Portable cabinet as shown front illustration - Grey hammertone finish-Not silk screened nor holes punched \$9.20 Net

#19,804 PRINTED Circuit type electrolytic condenser - 40-20-20-mfd. @ 150 Volt -\$1.40net

#19,805 PRINTED Circuit type electrolytic condenser-200-100-60 @175 volt-\$2.70 Net

#791 Complete Instruction & Service information on the TWO general types of AUDIO/VIDEO MIXERS described above. Complete with tube layout,schematic w parts values. \$1.00

#5600 - Power transformer used in AV transmitter #19,800 and useful with AV bd. #19,801. This special transformer supplies both B+ and 2 filament windings for use in circuit as shown. 115V AC 60 cycle primary \$4.50 Drawing "B"

#19,803 - Portable cabinet for A/V transmitter finished in an attractive gray hammertone-not silk screened nor holes punched. \$9.20

#19,802 - Metal subchassis for AV bd. #19,801 Printed circuit board supplied with 4 mounting clips. Chassis will fit into cabinet #19,803 \$1.95 Drawing "A"

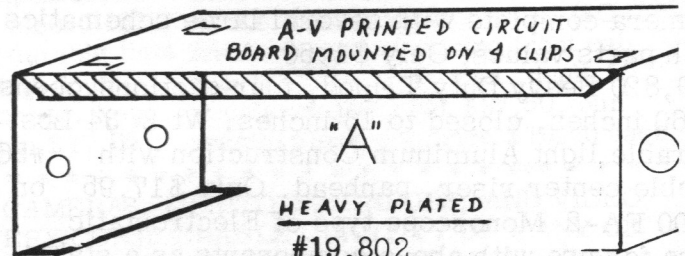
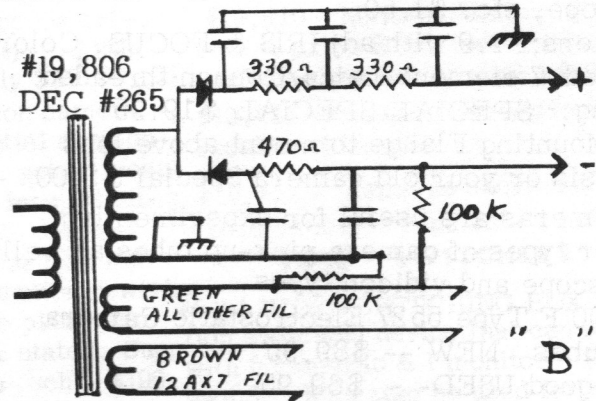
#1753 AIR-DUX COIL USED IN THE R.F. OSC. FOR SOME VIDEO TRANSMITTERS .44¢

#4800 - Diodes 400 ma 400 PIV 45¢ each

#19,806 Power Transformer 1-B+ Secondary, 115 VAC 60 cycle PRI 2 6.3 Volt filament windings - Use in Circuit "B" - \$4.50

#5660 SPECIAL 4.5 Mc. SOUND TRANSFORMER AS USED IN THE A/V BOARD FOR SOUND.3/4 Sq. 2"High.Double Tuned. Printed Circuit Mt.\$2.80

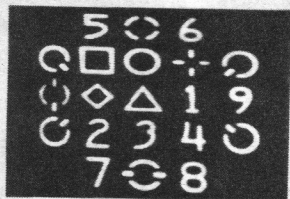
#1754 Filament Choke .8 Micro-Hy .56¢



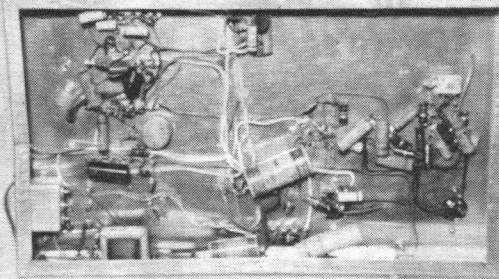
By Appointment only .E.C. #261

MONOSCOPE

1698



PATTERN GENERATED



TEST PATTERN MONOSCOPE TUBES FOR CLOSED-CIRCUIT APPLICATIONS

MONOSCOPE CAMERA

Have you ever sat at the workbench for hours on end running final checks on a newly constructed piece of ATV gear and found yourself in dire need of a fixed video test signal? Probably, and if you're like the rest of us quite likely you got out the vidicon camera or flying spot scanner and used it to generate the pattern. Without doubt, this works very well, but oh what a way to whittle the life out of that highly cherished pickup tube. (or CRT in the case of FSS). How much more practical this job could have been accomplished with the aid of a monoscope camera. Even though this type camera has always created interest among ATV'ers for purposes of generating fixed test patterns, its cost until recently has been prohibitive. Show a complete schematic of a simple yet effective monoscope camera. Here is the easiest way to get your camera, transmitter or monitor set up and operating properly. Our Type 1698 Test Monotron tube with a few parts from an old TV set or the usual electronic experimenters pile used in the simple circuit supplied with the tube gets you started in Closed Circuit or AMATEUR Television Systems. SIMPLER than a flying spot scanner-LESS fussy than a camera, this pattern generator produces a series of figures and numbers from the self-contained pattern. Stock No. 700FA-2 ONLY \$9.95 plus postage - Ship. wt. 3 lbs.

Instructions Only 50 Cents - Stock #779

MONOSCOPE TUBES

A Monoscope Tube is similar to a regular type Cathode Ray Tube in the Base and Electron gun Assembly but-In place of a clear glass front which is coated with Phosphor material there is inserted a METAL PLATE which has printed on it's surface a series of numerals, Indian Head pattern, TV Station Identification etc. The electron beam scans this target and the varying output caused by the printed matter is picked up from this metal plate and feed into and amplified by a somewhat conventional Video Amplifier. This presents a very stable, FIXED PATTERN, for testion and other purposes. The illustration shows the PATTERN GENERATED by our Tube Type #1698 Stock # 700 FA-2 only \$9.95

THESE TUBES COST THE GOVERNMENT OVER \$100.00 each AND ARE BRAND NEW AND GUARANTEED .

#6002-AC Cord and Plug .37 ¢

#2805- Six inch Square piece of Mu Metal which is wrapped around the 2" Electrostatic Tube in order to protect it from External Fields \$3.95

#5101- S.P.D.T. Slide Switch for On/Off .20 ¢

#1860 Peaking Coil 100 Micro-Hy .42 ¢

#2111- MONOSCOPE SOCKET-NEW WITH THE LEADS ATTACHED. DIHEPTAL \$1.50

#1540- Mallory Can Electrolytic Condenser, 60-40-75 Mfd. @ 450-450-75 Working VDC \$2.70

#779 BRIEF THEORY & CONSTRUCTION ARTICLE ON A LOW COST STABLE SIGNAL SOURCE, WITH A \$9.95 TYPE 1698 MONOTRON TEST PATTERN TUBE ONLY .50 ¢

POWER TRANSFORMER

#5601-An excellent value in a specially designed power transformer suitable for use with either the 2" Electrostatic Camera, Monoscope or the 1" Vidicon type of camera. B Plus winding is 150 volts either side of center tap and one leg of the winding has an additional winding to supply the High Voltage (600 VDC) for the 2" PIXICON or MONOSCOPE. Also has 6.3 VAC at 4 Amps. Small in size yet Husky performer \$18.95

#5622 Small Vertical blocking oscillator transformer which when used in circuitry supplied. provides a very excellent vertical frequency control. Only \$4.20 with recommended circuit.

#4800- Diodes for power supply. 400 Ma 400Piv Excellent in all power supply circuits .45 ¢ ea.

#6002 A.C. Cord & Plug .37 ¢

#19,101 Punched Chassis with front & rear plates with mounting clips for supporting the top printed circuit boards plus the 2 yokes and clamps to hold a 2" camera or Monoscope Tube.

As used in the #19,109 (prev. #253-D) Camera easily adapted for Monoscope use \$9.95

#1841-A small compact slug tuned coil which will provide excellent HORIZONTAL frequency stability with supplied circuit. (PIXICON) \$1.78

#19,857-TV Camera Cabinet Cover for Camera shown as #19,109 which may be used with the chassis #19,101 listed above. \$3.95

#19,858 Vented bottom cover for chassis \$1.00

MARSAN



#19,010
#19,011
#19,012

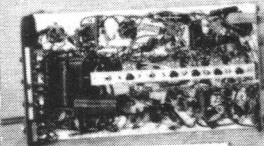


#5,001

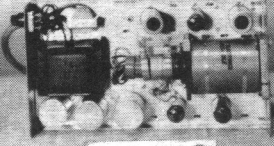


TM-2 8 inch Video Monitor
#19,400

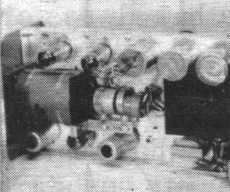
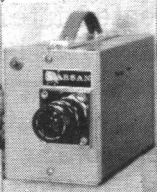
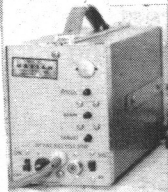
MARSAN



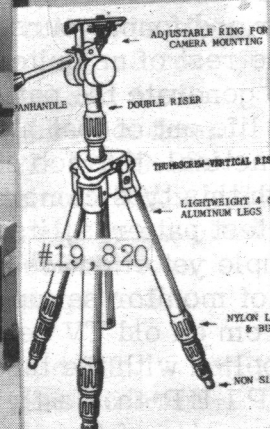
#19,001



#19,002



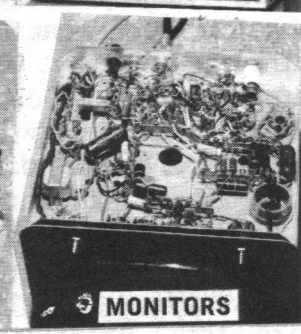
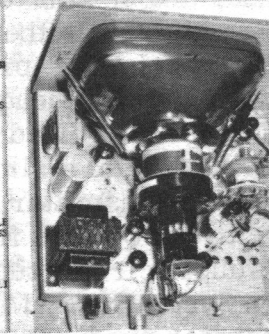
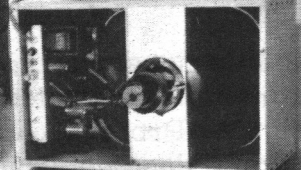
STANDARD CAMERA



#19,820



#19,410



MONITORS

#19,010 - Marsan Vidicon camera - latest type of the TC-2 production in modernistic case with rounded corners formerly stock #420-TC-2. These are brand new cameras sold complete with grade A vidicon & 2" lens ready to plug in & operate with output on either RF or video. These cameras are the last production line of this very popular unit which had a selling price then of \$699. Supp. w orig. serv. manual & sch. \$499. SPECIAL #19,011 - same as #19,010 but needs minor repairs & less vidicon but with all small tubes & lens. Supp. w/orig.serv. manual & sch. \$349.50 "B" vidicon w/above only \$49.50 add'l. #19,012 - Marsan Vidicon camera - sold as is but has essential components such as case, defl. yoke, focus coil, power transf. but less all tubes. Supp with lens & mount, some of these are experimental or developmental models & will require rewiring to the original circuit to place into operation. Supp. w orig. service manual & schematic. \$249.50 #755-TC-2 Camera Service Manual #756-TM8/17 Monitor Service Manual each \$2.00

#19,000 - Marsan Vidicon camera - an earlier type model TC-1. Perfect-sold in like new condition-complete with lens & all tubes including vidicon in operating condition with outputs for either video or RF. Supp. with orig. serv. manual & schematic \$399. #19,001 - Marsan Vidicon camera - same as above but needs minor repairs and less vidicon but with all small tubes & lens. Supp. w orig. serv. manual & schematic. \$299. "B" vidicon w above only \$49.50 add #19,002 - Marsan Vidicon camera - sold as is but has essential components such as case, defl. yoke, focus coil, power transf. but less all tubes. Supplied w lens & mount, some of these are experimental or developmental models & will require rewiring to the original circuit to place into operation. Sold as is & stated. Supp w orig. serv. manual & sch. \$199.

TRIPOD

#19,820 - Heavy duty tripod-four sectional-opens to 60", closed 16" wt. 2 3/4 lbs. Made of durable light aluminum throughout, with double riser center eleator panhead. Reg. Price \$29.95 - SPECIAL \$17.95

#19,400 - Marsan monitor 8"; regular selling price \$249.- perfect brand new - net \$189.00 #19,401 - As above but need minor repairs - complete w/all tubes. Special at \$149.50. #19,402 - Same as above but will need major repairs-w/all tubes. \$99.50. #19,410 - Marsan monitor 17" selling price \$298. net - new & perfect-close out special \$199.00 #19,411 -As above but needs minor repairs -\$149.00 #19,412 - Same as above but will require major repairs - \$119.95.

VIDEO SWITCHERS

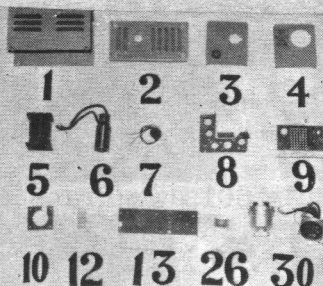
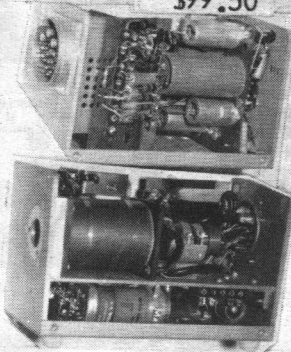
#5001 VIDEO SWITCHING BOX 5 position switching device that can be used with 5 cameras & 1 monitor. Rotary switch. May also be used for switching 1 camera to any one of 5 different lines or monitors. Coaxial fitting on one input & all 5 outputs. (SO-239) Small attractive sloping front cab. w 4 1/4", h 4 1/4" max. depth 5". Regular dealers net \$37.50, our special close-out price \$19.50 each.

***** SPECIAL NOTICE: IN ADDITION TO THE ABOVE LISTED CAMERAS, MONITORS, TRIPODS, AND VIDEO SWITCHERS OF MARSAN MANUFACTURE WE HAVE A VERY CONSIDERABLE QUANTITY OF MANY OF THE COMPONENTS ; THIS LIST IS QUITE EXTENSIVE AND WILL BE MAILED TO THOSE REQUESTING IT FREE OF CHARGE AS SOON AS IT IS PRINTED. MANY OF THE COMPONENTS WILL BE SOLD AT A REDUCED PRICE AND WILL BE USEFUL NOT ONLY FOR REPAIR OF EXISTING UNITS BUT ALSO FOR EXPERIMENTAL, RESEARCH & DEVELOPMENTAL WORK AND MANUFACTURE.

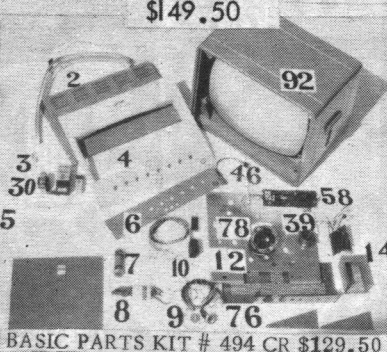
SCANOSCOPE WIDE SCREEN TV SYSTEM

Stock #494 KIT **NOW ONLY** \$49.50
\$99.50

Stock #498 **NOW ONLY** \$99.50
\$149.50



Stock #492 - \$99.50



BASIC PARTS KIT # 494 CR \$129.50



Stock #493 - \$99.50

TV CAMERA MODEL 700

Stock #492 **BASIC COMPONENTS PARTS KIT** for Model 700 CAMERA consisting of all NEW parts including complete case, chassis, deflection yoke and focus coil, Vidicon socket, some condensers and resistors, - with schematic and drawings. NO Vidicon, Lens or Lens Mount. Parts listed. See Pix #492

- | | |
|------------------------------|--------------------------------------------------------------------------------------------------------------|
| (1) Camera Case Cover | (10) Vidicon Front Focus Coil Mount |
| (2) Camera Case Bottom Plate | (12) Base plate angle |
| (3) Camera Case Front | (13) Vidicon base plate Panel |
| (4) Camera Case Rear | (26) Vidicon Tube Neck Clamp |
| (5) Vidicon Focus Coil | (30) Cannon Chassis Connector - mate 24 Conductor (3 Co-ax) PLUS Camera Schematic and Miscellaneous drawings |
| (6) Vidicon Deflection Yoke | |
| (7) Vidicon Socket | |
| (8) Front sub chassis | |
| (9) Rear sub chassis | |

#19,851 - Complete cabinet assembly for wide screen camera model 700 comprising top cover, bottom plate, front panel, rear panel, yoke face plate, front subchassis, rear subchassis, vidicon front focus coil mount, base plate angle, vidicon base plate panel, vidicon tube neck clamp, Cannon chassis connector. With schematic as originally used. \$29.95

POWER SUPPLY MODEL 701

Power Supply unit includes Synchronizing Generator.

Stock #493 **BASIC COMPONENTS KIT** - Less small resistors, condensers and power transformer (use any old TV set unit.) Supply your own misc. small components and tubes. Parts supplied - See Pix #493

- | | |
|-----------------------------------------------------------------------------------|-----------------------------------------------------------------|
| (1) Punched Chassis completely painted and silk screened with mounted test points | (8) 2 - Matching Cable end plugs |
| (2) Chassis bottom plate | (9) A.C. Power cord |
| (3) Chassis cover | (10) Horizontal EXP coil |
| (4) 31.5 Kc Xtal and socket | (11) A.C. Power relay |
| (5) Transistor and socket | (26) 2 - 500 mfd. 50 volt condx. |
| (6) Vertical output to Vidicon Yoke Transformer | (27) 1000 mfd. 3 volt condenser PLUS 1 - OA2 Tube 1 - 6080 Tube |
| (7) 2 - Cannon Chassis connectors to feed monitor and camera | WITH Complete Set of Schematics, drawings, etc. |

#19,852 - Power supply Synchronizing gen. model 701 punched chassis, completely painted and silk screened with mounted test points, chassis bottom plate, chassis cover, 2 Cannon connectors, crystal socket, AC Power cord With schematic as originally used \$24.95

MONITOR MODEL 702

CONTROLS: Master Power Switch; Target, Beam, and Focus of Camera;

Stock #494 **KIT of Basic Components** for Model 702 MONITOR comprising the following:

- | | |
|-------------------------------------------|-------------------------------------------|
| (1) 2 pin tube Mtg straps | (14) H.V. Flyback trans and case |
| (2) Cabinet Back Cover | (30) Vertical output trans |
| (3) Top Vert Chassis bracket | (39) H.V. Rect. socket |
| (4) CRT Mask | (46) CRT socket |
| (5) CRT Herculite Glass | (58) Wired and tested Printed Ckt. Bd. |
| (6) Monitor control panel | (76) Bottom Chassis with R. & L. Bkts. |
| (7) Input Elec. Cond. | (78) CRT Deflection Yoke |
| (8) A.C. Line cord | (92) Cabinet |
| (9) 2 Cannon chassis connectors | PLUS 1 - 6080 Reg. Tube 1 - OA2 Reg. tube |
| (10) Jones plug and mate | |
| (12) Punched Heavy aluminum Vert. chassis | |

WITH Schematics drawings, etc. NO Power Transformer included. Most any TV set transformer will work as requirements due to regulated power supply are not too critical. Shipp. Wt. 60 lbs.

Stock #494 CR Same as #494 but includes a BRAND NEW 21DAP4 Cathode Ray tube mounted in the cabinet. Approx. ship. Wt. 80 lbs.

#19,853 - Cabinet only as used in monitor model 702. \$9.95

#19,854 - Cabinet used in monitor model 702.

Complete with punched heavy aluminum vertical chassis, bottom chassis with right & left brackets, Herculite safety glass for CRT, CRT mask, Top vertical chassis brackets, cabinet back cover, monitor control panel, 2 Cannon chassis connectors, AC line cord and plug. \$29.95

#5630 - A very high quality horizontal output & high voltage flyback transformer used in Grimsor wide screen monitor 702 which matches the 6DQ6 horizontal output tube to the deflection yoke for the 21DAP4 cathode ray tube (transformer T2 on schematic) P.U.R.

#5620 - Vertical output-used as transformer T-3 in wide screen monitor model 702 which matches monitor vertical output tube type 6W6 to vertical deflection yoke coils. P.U.R.

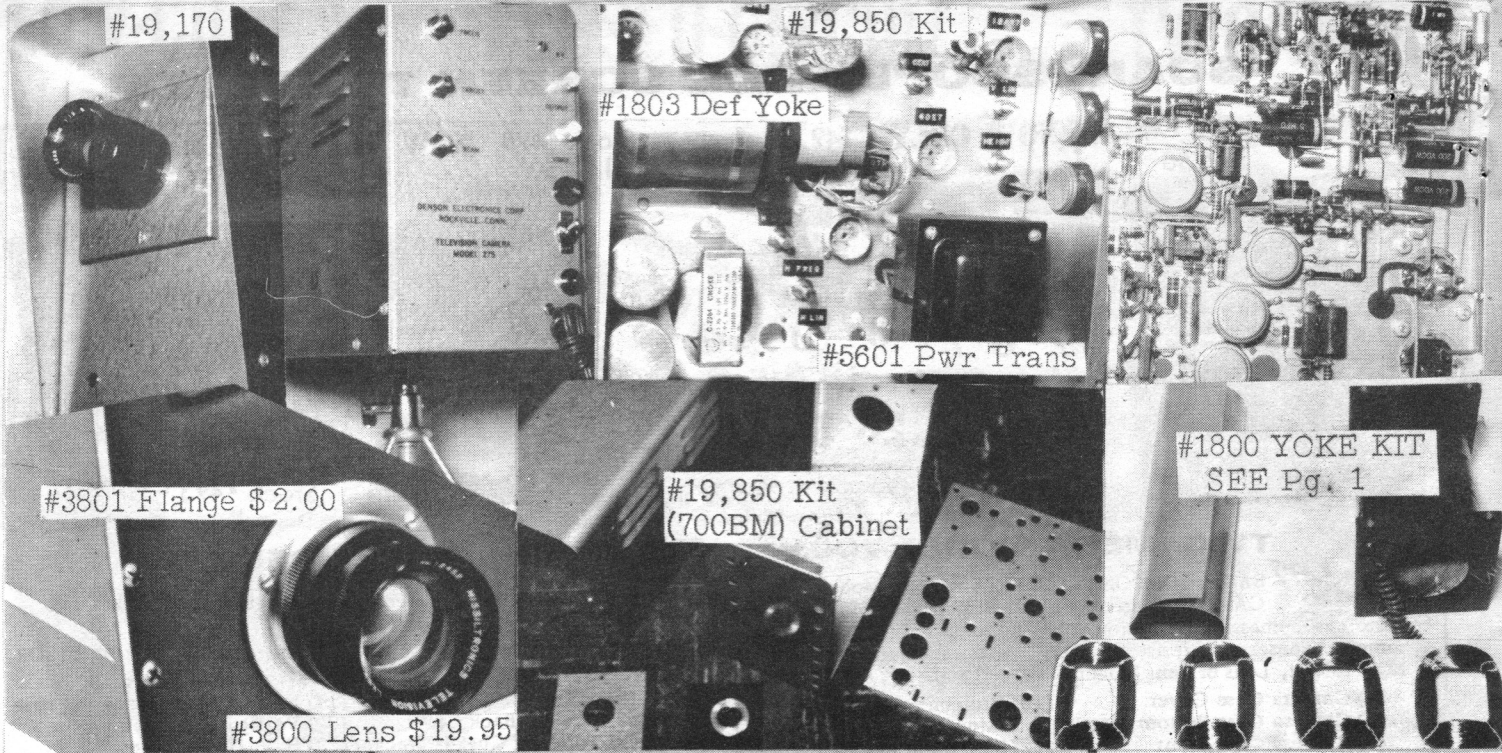
SPECIAL * * * WE HAVE IN PREPARATION A VERY COMPLETE LISTING OF MANY, MANY COMPONENTS WHICH WERE USED IN THE MANUFACTURE OF THE GRIMSON WIDE SCREEN TELEVISION SYSTEM UNITS. INCLUDED ARE FLYBACK TRANSFORMERS, VERT. OUTPUT FOR MONITOR & VIDICON CAMERA, VERT. OSCILLATOR, 31.5 CRYSTALS, 21DAP4 CRT, 7 Hard to find IMPORTED TUBES, SPECIAL WIDTH, LINEARITY, COMPRESS COILS, VIDICON DEFLECTION YOKES ETC. A COPY WILL BE MAILED FREE UPON REQUEST WHEN PRINTED.

#492 SPECIAL CLOSE-OUT \$79.50

#493 SPECIAL CLOSE-OUT \$79.50

#494 SPECIAL CLOSE-OUT \$49.50

#494-CR SPECIAL CLOSE-OUT \$79.50



Chassis & Cabinets:

#19,850 - Parker Kit TV camera 5pc. assy. punched chassis with 1/4 x 20 tapped hole for tripod in mounting plate. Finished in gray hammertone w/back panel silk screened for target focus, etc. controls \$19.95.

SPECIAL Basic Components Kit - \$79.95
SAVE - - - - \$15.47

- 1-#700BM (19,850) Cabinet w/"C" mount \$19.95
- 1-#5601 Power Transformer 18.95
- 1-#1800 Vidicon deflection yoke and focus coil Kit 24.50
- 1-#2100 Vidicon socket 3.50
- 1-#2105 Xtal socket .36
- 1-#6002 AC cord with plug .37
- 1-#2860 Pilot Light .54
- 1-#5105 AC power switch toggle SPST .52
- 1-#3800 Lens 19.95
- 1-#3802 Lens adaptor to "C" Mount 3.50
- 1-#1841 Horizontal Oscillator coil 1.78
- Instructions - Large schematic 1.50

Regular \$95.42

Above kit with #1801- Completed yoke and coil Regular #39.95 in place of #1800 - Regular \$110.87 - SAVE \$11.37 - Only - \$99.50
 Above kit with #1803 high definition yoke and coil Regular \$59.95 in place of #1800 -Regular \$130.87 - SAVE \$11.37 - Only - \$119.50
XTRA SPECIAL ! - ALL parts in Basic parts Kit #1803 plus all small resistors, condensers, tubes (including a tested good vidicon) No xtal or tripod -

#19,175 (Prev. Kit #273-63N) only -----\$199.95
 #19,170 Above kit wired, tested ready to use (allow 3 weeks delivery) - Only -----\$395.00
 #764 YOKES - YIKES; HOW TO WIND YOUR OWN DEFLECTION YOKES etc. .50¢
 #781 "HOW TO BUILD LOW COST TV CAMERA COMPLETE WITH LARGE SCHEMATIC \$1.50
 See our catalog #964M2 page 14 for

#3800 Lens F 1.9 with adjustable IRIS from F 1.9 to F 22. Adjustable Focus. Leica/Cannon threaded mounting. 7element, color corrected \$19.95

TELEVISION CAMERA TUBES

- 6198 Vidicons-Same prices and specifications as 7290 interchangeable with 10667
 - Grade Ham "A"-Almost perfect- Excellent for Amateur or non-critical commercial use. Few slight imperfections outside the viewing area
 - Stock #700EA \$100.00
 - Grade "B"-Further relaxed specifications, but still good for Ham use
 - Stock #700EB \$60.00
 - Grade "C"-Useful for lowest cost for initial use, adjustments and experimenting.
 - Stock #700EC \$34.50
- | Stock No. | Type | Price |
|-----------|--------------------------------------------------------|----------|
| 2100 | Socket for Vidicon | \$3.50 |
| 700F | Type 5527 Electrostatic Camera Tube - NEW | \$89.95 |
| | USED | \$69.95 |
| 700FA-2 | Type 1698-2 inch Electrostatic Test Monotron - Special | \$9.95 |
| 700FA-3 | Similar to 1698 except 3 inch Brand NEW | \$50.00 |
| 700H | Type 212 Vericon Camera Tube NEW | \$100.00 |
| 784 | Schematic for Type 212 Vericon Camera | \$5.00 |
| 1820 | Type 212 Vericon Deflection Yoke - NEW | \$75.00 |
| 1821 | Type 212 Vericon Deflection Yoke and focus coil - USED | \$100.00 |
| 700J | Type 5820 Orthicon Camera Tube - USED | \$25.00 |
| 1830 | Type 5829 Orthicon Deflection Yoke-USED | \$25.00 |
| 1831 | Type 5820 Orthicon Deflection Yoke NEW 210D1 | \$100.00 |
- #5101 SPDT SLIDE SWITCH 3A 125V .20¢